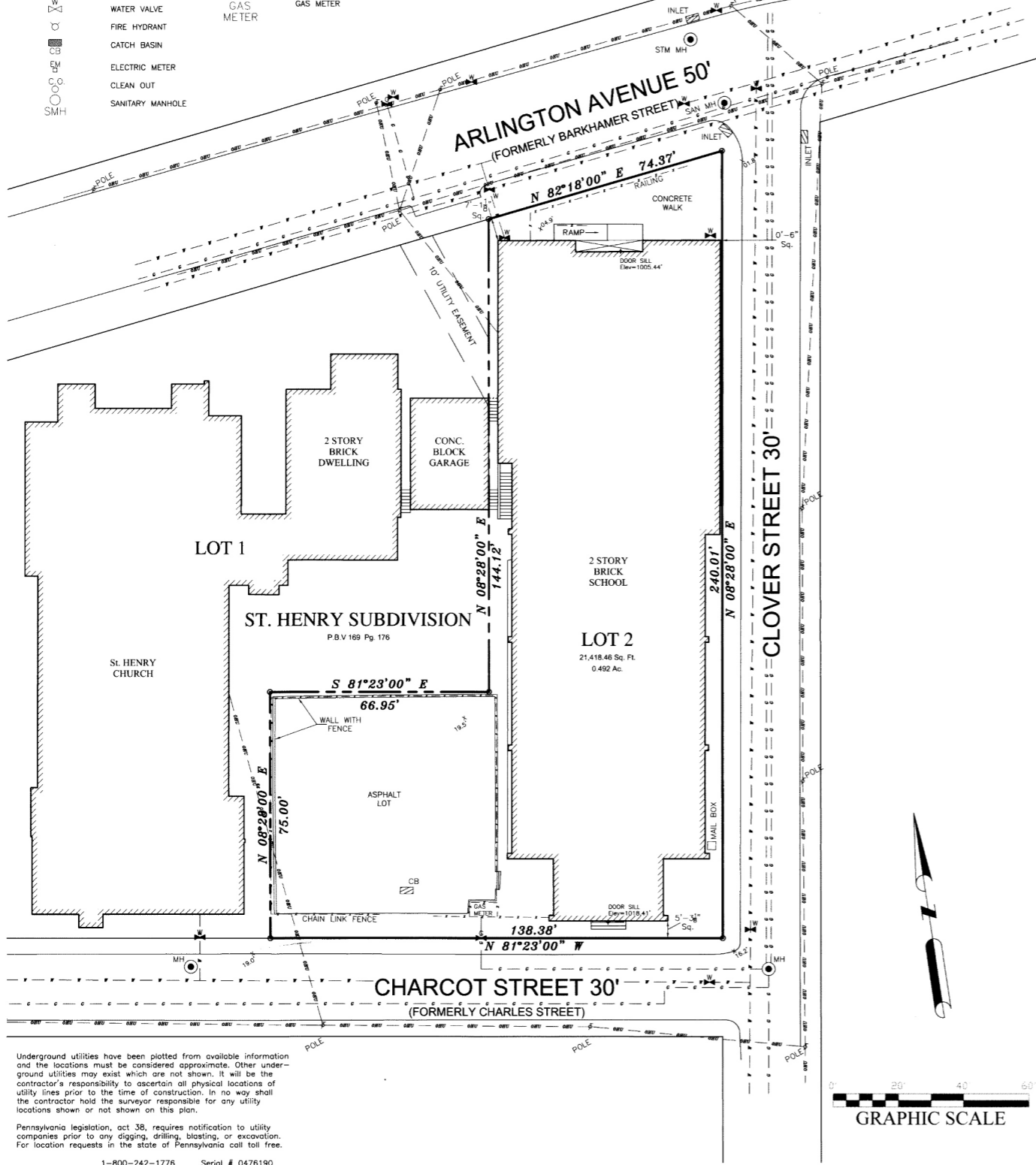


LEGEND

- | | | | |
|--|--------------------|--|---------------------|
| | GASLINE | | STORM MANHOLE |
| | WATERLINE | | UNKNOWN MANHOLE |
| | SANITARY SEWER | | TELEPHONE POLE |
| | STORM SEWER | | STANDARD LIGHT POLE |
| | OVERHEAD UTILITIES | | GAS METER |
| | GAS VALVE | | WATER VALVE |
| | GAS METER | | FIRE HYDRANT |
| | WATER VALVE | | CATCH BASIN |
| | FIRE HYDRANT | | ELECTRIC METER |
| | CATCH BASIN | | CLEAN OUT |
| | ELECTRIC METER | | SANITARY MANHOLE |
| | CLEAN OUT | | |
| | SANITARY MANHOLE | | |



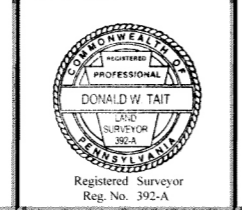
Underground utilities have been plotted from available information and the locations must be considered approximate. Other underground utilities may exist which are not shown. It will be the contractor's responsibility to ascertain all physical locations of utility lines prior to the time of construction. In no way shall the contractor hold the surveyor responsible for any utility locations shown or not shown on this plan.

Pennsylvania legislation, act 38, requires notification to utility companies prior to any digging, drilling, blasting, or excavation. For location requests in the state of Pennsylvania call toll free. 1-800-242-1776 Serial # 0476190



ARLINGTON MIDDLE SCHOOL
SITUATE IN
16th WARD, CITY OF PITTSBURGH,
ALLEGHENY COUNTY, PA.
MADE FOR
**PITTSBURGH BOARD OF
PUBLIC EDUCATION**

Date: March 2, 2006
Scale: 1"=20'
Drawn By: CRG
Reviewed By: DTT
File Number: 31641
CAD File: 06.0048
Revisions:



TAIT ENGINEERING
908 Perry Highway
Pittsburgh, Pennsylvania 15229
tel: 412.364.6090
fax: 412.364.6716
e: taiteng@earthlink.net

