

PROPERTY FACT SHEET

Vacant Land

Armorhill Ave. and Revenue St., Homestead, PA 15120

Minimum Reserve Price: \$350,000

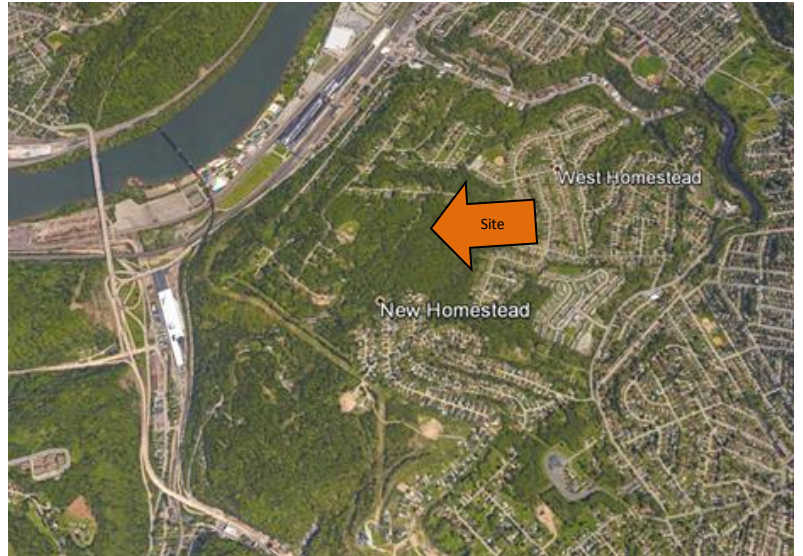
Tax Parcel #: Multiple parcels (103)

Land Area: Approximately 23.6 acres, including "paper" streets. Seller purchased 105 individual lots (2 sold in 2009) for a net total of 17.34 acres.

Zoning: R1-D Single Unit Detached Residential

Topography: Level to gently sloping

Lease or Other Encumbrances: None known at this time. Public park affects 2 lots on Revenue St.

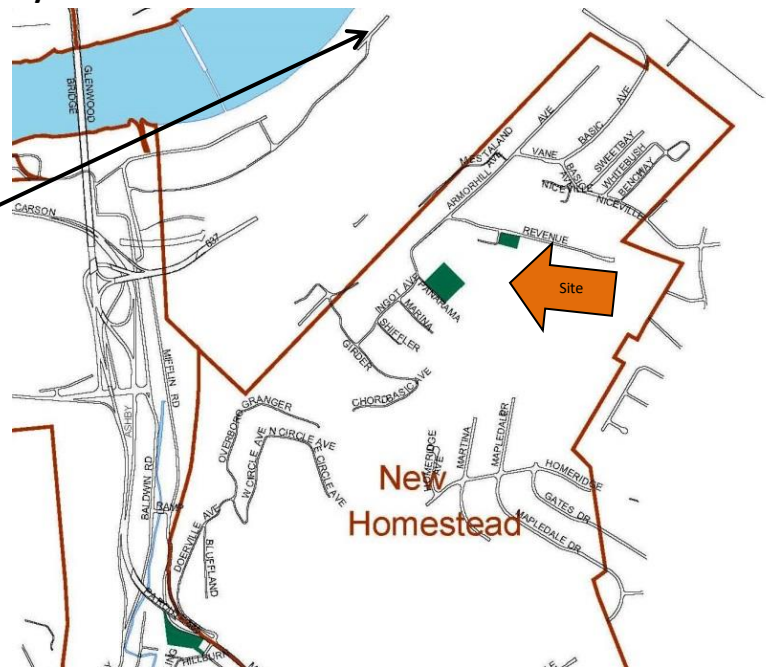


Seller conducted limited investigation of soils, geotechnical and past mining operations in 2005. Reports are inconclusive but available to Buyer.

Neighborhood: New Homestead

Title Search Ordered/Received: No

**The Waterfront Shopping Center
2.1 Miles from Site**

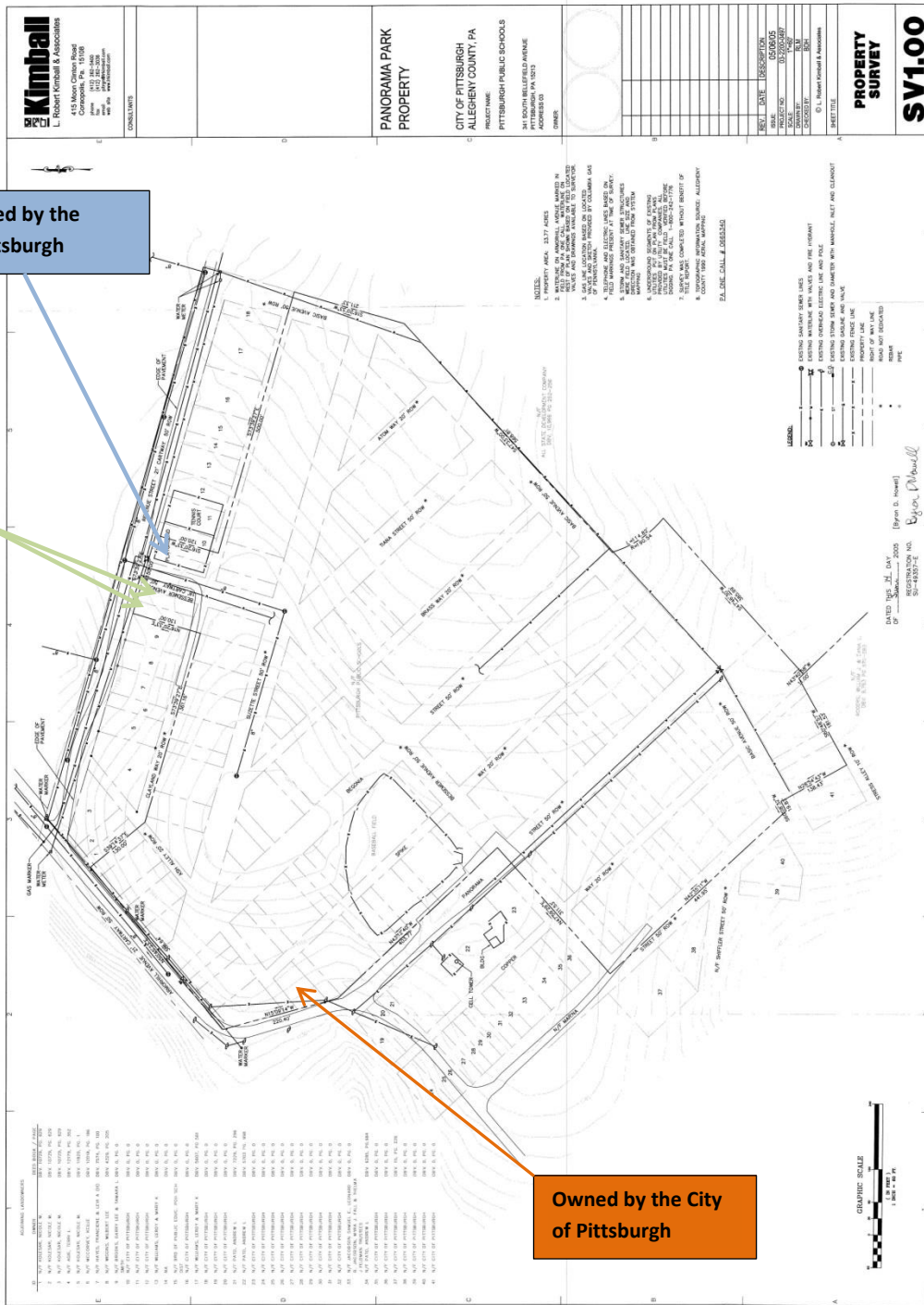


The information contained herein has been obtained from sources believed to be reliable but has not been verified. Fourth River Development LLC makes no guarantee, warranty or representation about the content or the accuracy thereof. Any projections, assumptions, or estimates are used for example only and do not represent the current or future condition or performance of the property. Each recipient of this information and your advisors should conduct a careful, independent analysis of the property to determine if the property will meet your needs.

City Park – Lots owned by the School District of Pittsburgh

Sold in 2009

Owned by the City of Pittsburgh



The information contained herein has been obtained from sources believed to be reliable but has not been verified. Fourth River Development LLC makes no guarantee, warranty or representation about the content or the accuracy thereof. Any projections, assumptions, or estimates are used for example only and do not represent the current or future condition or performance of the property. Each recipient of this information and your advisors should conduct a careful, independent analysis of the property to determine if the property will meet your needs.