

LEGEND

	PROPERTY LINE
	SANITARY SEWER LINE
	STORM SEWER LINE
	500 EXISTING CONTOUR LINE
	OVERHEAD ELECTRIC LINE
	UNDERGROUND ELECTRIC LINE
	WATER LINE
	GAS LINE
	STORM/DLCO MANHOLE
	SANITARY MANHOLE
	CATCH BASIN
	WATER BOX
	GAS BOX
	UTILITY POLE
	LIGHT STANDARD
	FIRE HYDRANT
	MONUMENT

NOTES:

- Property subject to any issues that may be revealed by a current and complete title report.
- Declaration is made to the original purchaser of the survey. It is not transferable to additional institutions or subsequent owners. Copies of this plan without an impression seal are void and are for reference only.
- At time of survey, not all utility companies have responded through PA one call.
- Underground utilities have been shown from a Survey of Bon Air School by WPA Project 20594, Serial #1805, dated 1-3-1941, and available information from the PA one call.
- Bearings based upon information provided by the School District of Pittsburgh.
- All deed information was provided by the School District of Pittsburgh. Tait Engineering did minimal deed research.
- Elevations given are based on an assumed elevation datum, and have not been tied into any bench marks.

Underground utilities have been plotted from available information and the locations must be considered approximate. Other underground utilities may exist which are not shown. It will be the contractor's responsibility to ascertain all physical locations of utility lines prior to the time of construction. In no way shall the contractor hold the surveyor responsible for any utility locations shown or not shown on this plan.

Pennsylvania legislation, act 38, requires notification to utility companies prior to any digging, drilling, blasting, or excavation. For location requests in the state of Pennsylvania call toll free.

1-800-242-1776 Serial # 1035592

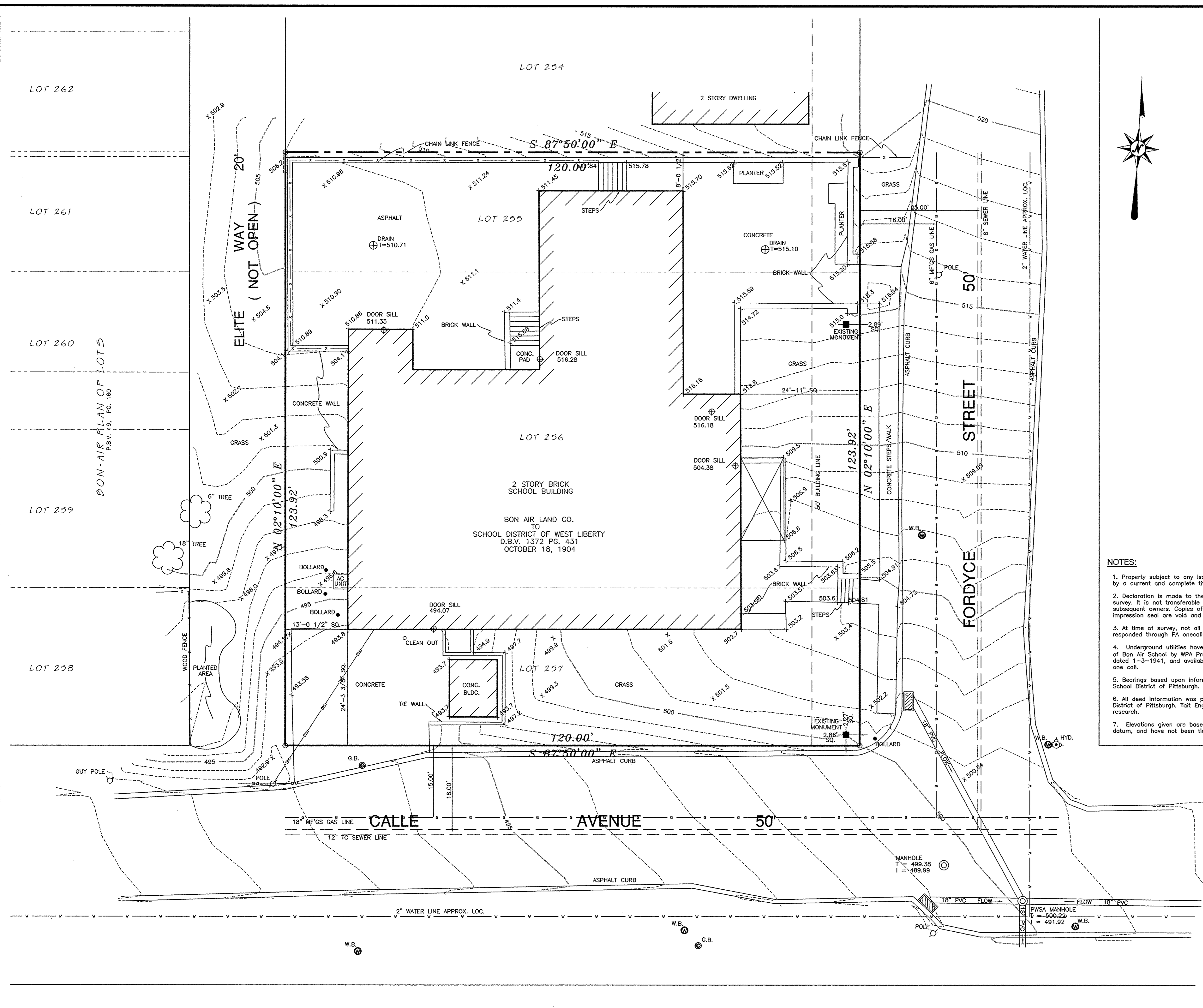
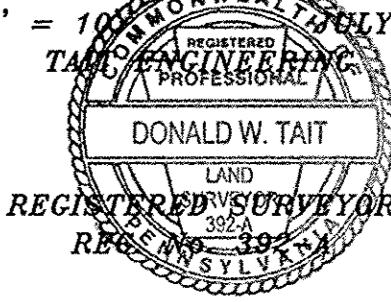
TOTAL PLAN AREA:

14,870.40 Sq. Ft.
0.341 Acres

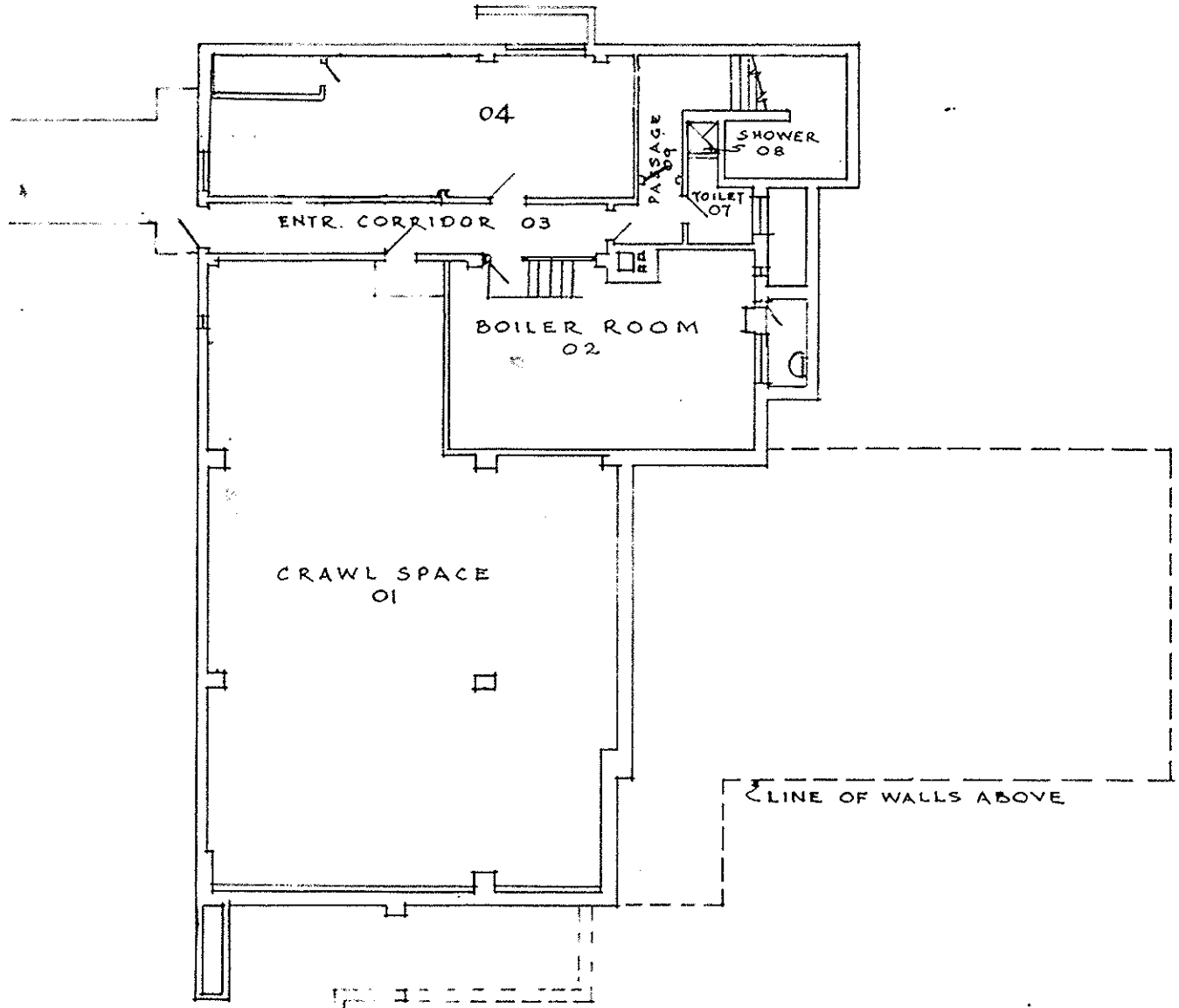
PLAN OF PROPERTY
"BON AIR SCHOOL"
 SITUATE IN
18TH WARD, CITY OF PITTSBURGH,
ALLEGHENY COUNTY, PA.

MADE FOR
PITTSBURGH BOARD OF
PUBLIC EDUCATION

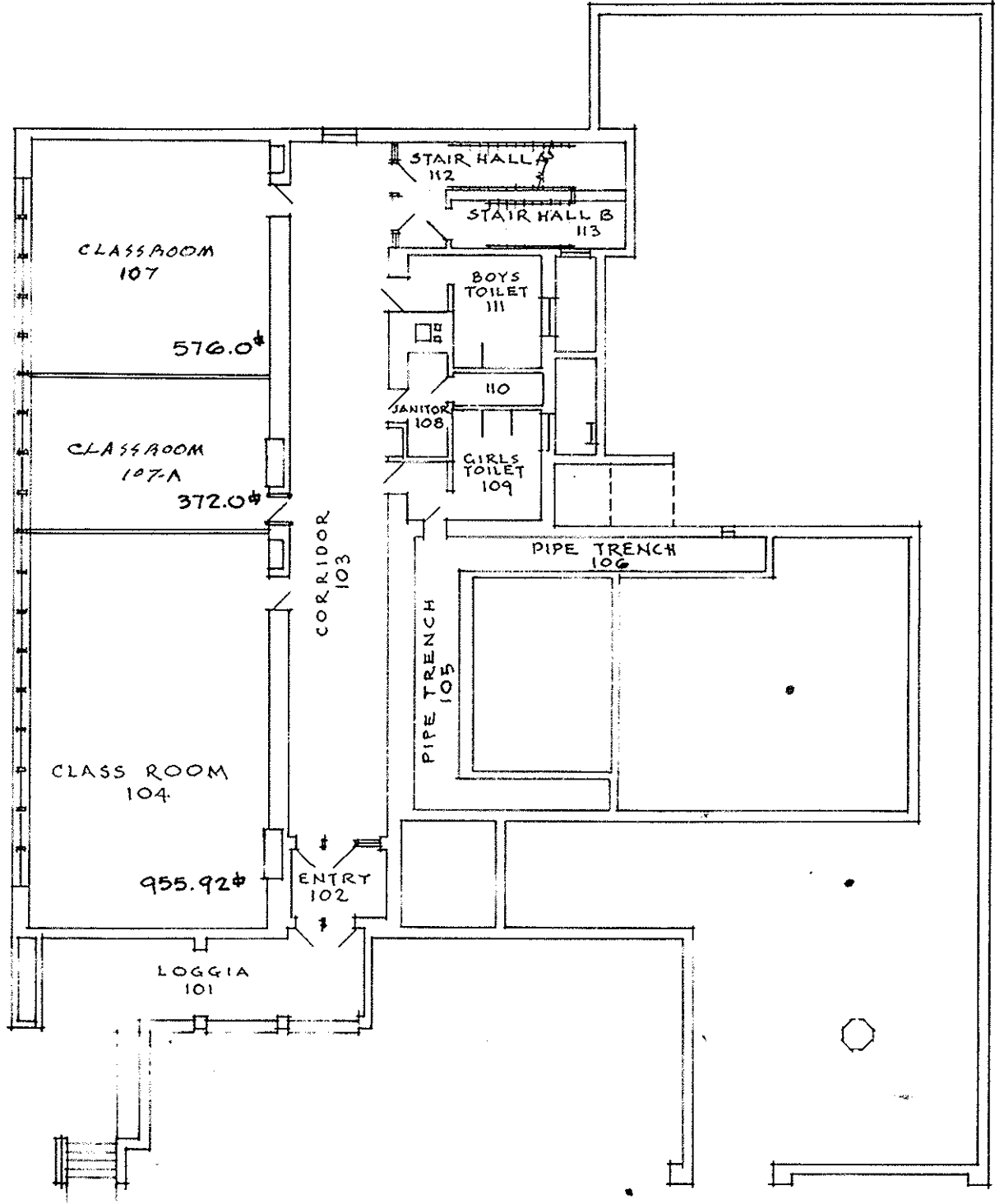
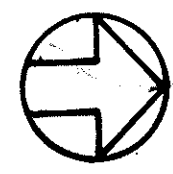
SCALE: 1" = 10'



252 FORDYCE ST.
PAH., PENNA. 15210



BASEMENT PLAN



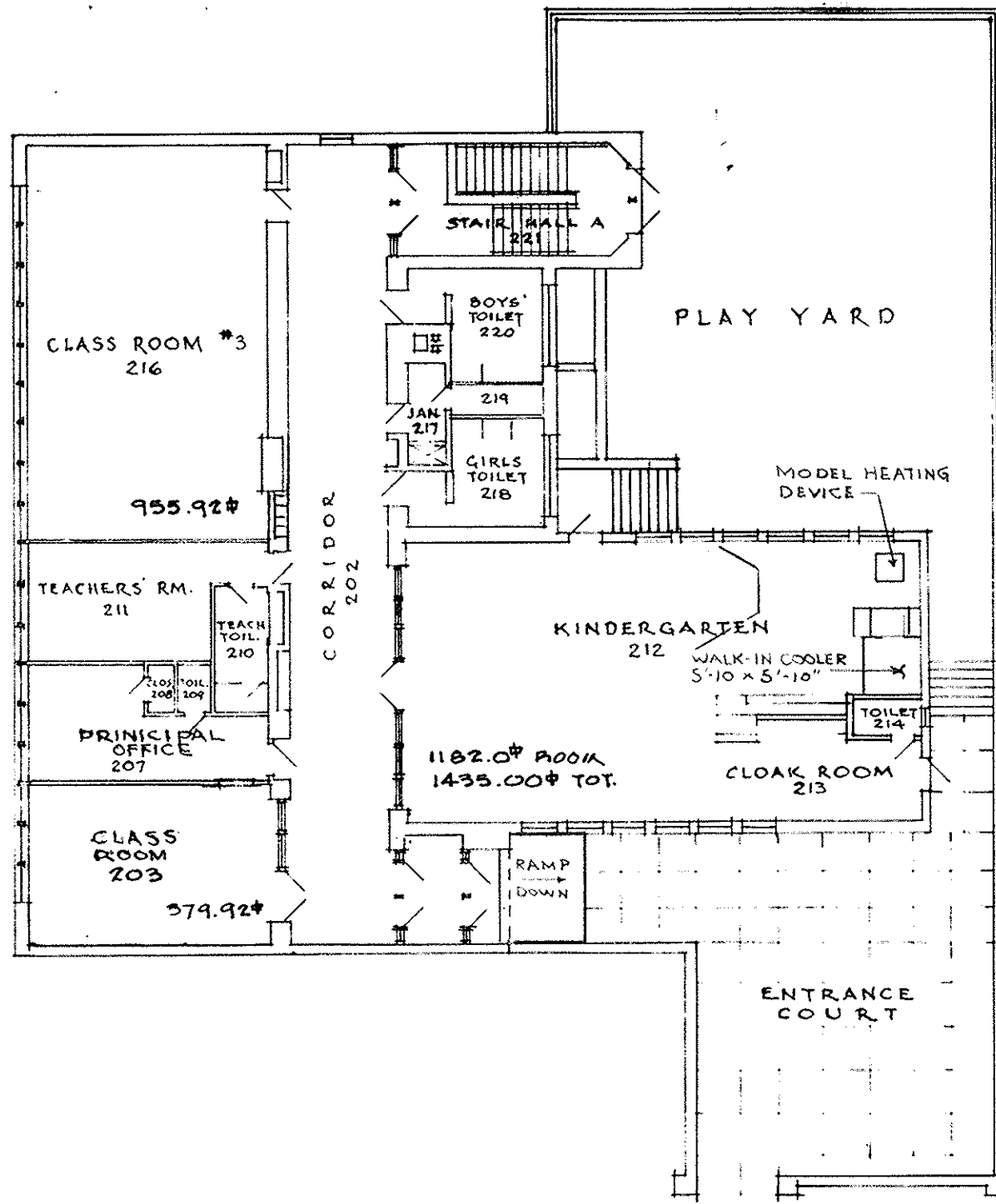
FIRST FLOOR PLAN

CLASSROOM SQ. FT. 1903.92#

DATE JUNE, 1989

SCALE 1/16" = 1'-0"
SHEET NO. 1 OF 2

252 FORDYCE ST.
PGH., PENNA. 15210



SECOND FLOOR PLAN
CLASSROOM SQ. FT. 2770.84#

DATE JUNE, 1989

SCALE 1/16" = 1'-0"
SHEET NO. 2 OF 2