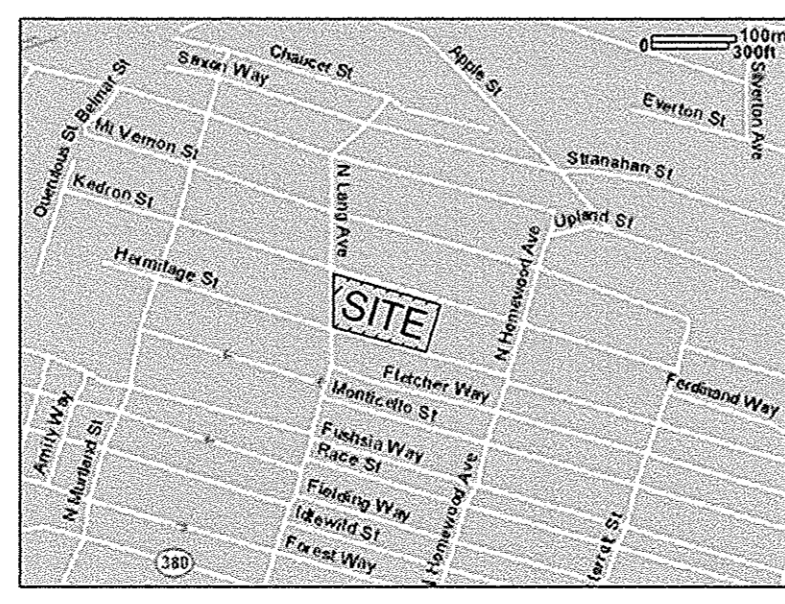


- LEGEND**
- W — WATERLINE
 - G — GAS LINE
 - SAN — SANITARY SEWER
 - STORM — STORM SEWER
 - DHU — OVERHEAD UTILITIES
 - X — FENCE
 - G — GAS VALVE
 - W — WATER VALVE
 - HYD — FIRE HYDRANT
 - SAN MH — SANITARY MANHOLE
 - STORM MH — STORM MANHOLE
 - Ø — TELEPHONE POLE

Underground utilities have been plotted from available information and the locations must be considered approximate. Other underground utilities may exist which are not shown. It will be the contractor's responsibility to ascertain all physical locations of utility lines prior to the time of construction. In no way shall the contractor hold the surveyor responsible for any utility locations shown on this plan.

Pennsylvania legislation, act 38, requires notification to utility companies prior to any digging, drilling, blasting, or excavation. For location requests in the state of Pennsylvania call toll free.

1-800-242-1776 Serial # 3346224



VICINITY MAP



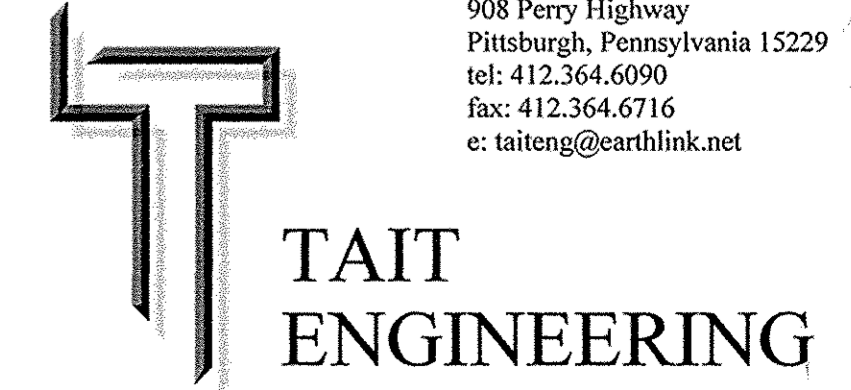
NOTE: SURVEYOR HAS MADE NO INVESTIGATION OR INDEPENDENT SEARCH FOR EASEMENTS OF RECORD, ENCUMBRANCES, RESTRICTIVE COVENANTS, OWNERSHIP TITLE EVIDENCE, OR ANY OTHER FACTS THAT AN ACCURATE AND CURRENT TITLE SEARCH MAY DISCLOSE.

NOTE: PLAN IS IN CITY STANDARD MEASURE.

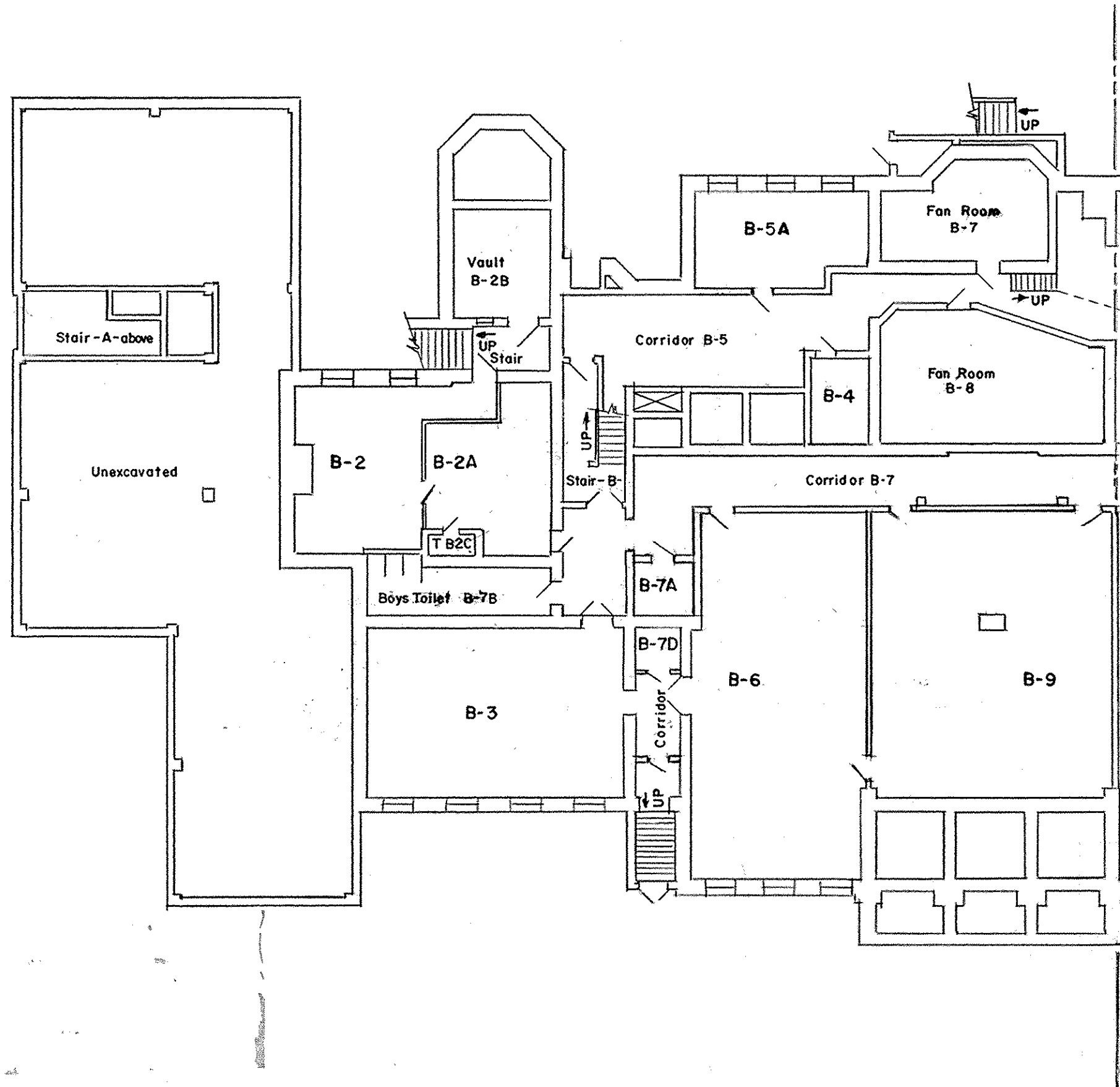
NOTE: TOPOGRAPHY IS BASED ON AN ASSUMED ELEVATION DATUM.

**PLAN OF PROPERTY
PARTIAL PLAN OF TOPOGRAPHY**
SITUATE IN
**CITY OF PITTSBURGH, 13th WARD,
ALLEGHENY COUNTY, PA.**
MADE FOR
PITTSBURGH PUBLIC SCHOOLS

Date: DECEMBER 10, 2004
Scale: 1" = 20'
Drawn By: CRG
Reviewed By: LAT
File Number: 34218
CAD File: 04.0323
Revisions:



7109 Hermitage Street
PGH, Penna. 15208-1112



Class Rm. Sq. Ft.	8,258	Second Floor
Library Sq. Ft.	1,702	Second Floor
Class Rm. Sq. Ft.	9,036	First Floor
Multi-Purpose Sq. Ft.	2,400	First Floor
Food Prep Sq. Ft.	300	First Floor
Class Rm. Sq. Ft.	5,662	Basement Floor
Building Square Feet:.....	58,832	
Site Square Feet:.....	77,644 (1.78 Acres)	

